



CONGRATULATIONS



35  
YEARS  
OF  
SERVICE

Thomas  
Smith



Thank you  
Thomas!



This milestone is the perfect opportunity to recognize the many contributions you have made toward our success and to celebrate your years of honorable service. Because of your dedication and integrity, St. Elizabeth Healthcare is one of the oldest, largest, and most respected medical providers in the Greater Cincinnati region.

Thank you for being committed to providing high quality healthcare and services consistent with our mission, vision, and values and with honesty and consistency. We understand the continued growth and success of St. Elizabeth Healthcare revolves around a commitment from all of our associates.

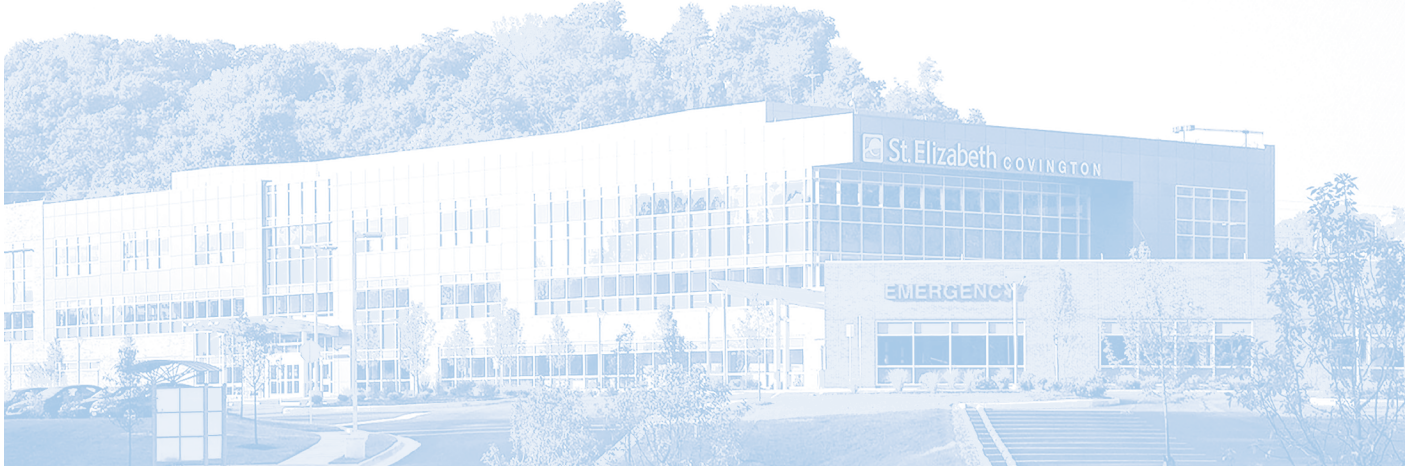
Thank you for being part of this great team!

### Our Mission

As a Catholic healthcare ministry, we provide comprehensive and compassionate care that improves the health of the people we serve.

### Our Vision

St. Elizabeth is the preferred destination for healthcare, where innovative professionals deliver the highest quality of care.





35 Years of Memories

We appreciate you Thomas!

*Way to go!*

*Outstanding!*

*Great work!*

*We value you!*

*We appreciate you!*

*You make a difference!*

*Rewarding your work!*

*Thank you for your service!*

*Teamwork!*

*Congratulations!*

This milestone is the perfect opportunity to recognize the many contributions you have made toward our success and to celebrate your years of honorable service. Because of your dedication and integrity, St. Elizabeth Healthcare is one of the oldest, largest, and most respected medical providers in the Greater Cincinnati region.

Thank you for being committed to providing high quality healthcare and services consistent with our mission, vision, and values and with honesty and consistency. We understand the continued growth and success of St. Elizabeth Healthcare revolves around a commitment from all of our associates.

As a token of our gratitude in serving our patients and furthering our mission, I invite you to select an award to commemorate this special occasion. Whatever memento you select, I hope it reminds you of our sincere gratitude for all your efforts.

Thank you for being part of this great team.

Sincerely,



Garren Colvin,  
President and CEO  
St. Elizabeth Healthcare



Thank You!

**Thomas Smith**  
35 Years of Service

Web Address: [www.stelizabeth.isrewards.com](http://www.stelizabeth.isrewards.com)  
Invitation Number: 1234-5678-9101-1234  
Company Code: 7445

### ORDERING YOUR AWARD

Orders may be placed in the following ways:

**Web** To order your award online, log in to your account using the invitation number listed above.

**Phone** Call 1.800.337.8914 and refer to your company code: 7445. Live customer service operators are standing by, 24 hours a day, 7 days a week.

### MERCHANDISE ARRIVAL

- >> Standard delivery time is 1-3 weeks, but allow up to 5 weeks to receive your item.
- >> Please inspect your selection immediately upon receiving it.
- >> Refuse your selection if it appears damaged at the time of delivery.
- >> If you are not satisfied with your item, we will gladly exchange it for you.
- >> Exchanges must be made within thirty (30) days.

For additional questions regarding damaged merchandise or exchanges, please call 1.800.337.8914 and refer to company code: 7445.

Ordering Information



#### DIAMOND HEART NECKLACE.

For the woman who has a natural way of melting hearts. This lovely diamond heart necklace features a .01ct round brilliant cut diamond set in 14k yellow gold with an 18" cable chain.  
A16-10001



#### BULOVA MEN'S BRACELET WATCH.

The multifunction design features stainless steel with a two-tone gold and silver ion-plated finish with a black dial, day, date and 24-hour sub dials. Water resistant to 30 meters.  
A16-10002



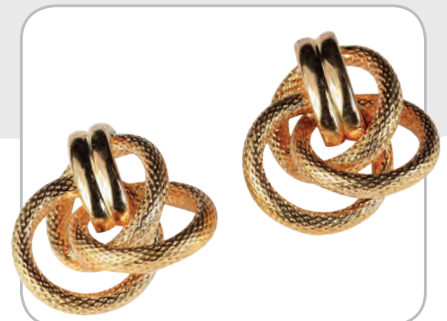
#### MAUI JIM MCGREGOR POINT SUNGLASSES.

These sunglasses offer a sturdy, sleek tortoise acetate frame with HCL bronze high performance Maui Evolution lenses. The ClearShell hard coat on lenses provides scratch resistance.  
A16-10003



#### KENNETH COLE FLAPOVER PORTFOLIO COMPUTER CASE.

Features a rich, full grain cowhide leather exterior, large double gusset construction and secure tuck lock closures. Measures 16" x 12.5" x 4".  
A16-10004



#### 14KT YELLOW GOLD KNOT EARRINGS.

Beautiful 14k yellow gold knot earrings from Tourneau.  
A16-10006



#### HOWARD MILLER KATHRYN WALL CLOCK.

Finished in Tuscany cherry on select hardwoods and veneers, this flat top wooden wall clock features a unique fret cut grill over plain glass, turned columns, and decorative top molding. Measures 34" x 16" x 9".  
A16-10005



#### DETOUR STORAGE BENCH.

Finished in an espresso bonded leather with all wood legs. Multi-functional capabilities as a storage or seating bench. Measures 36" x 17.5" x 19".  
A16-10007



**WATCHGEAR BY TOURNEAU WOMEN'S GOLD TONE WATCH.**  
Features a 40mm gold tone case, Swarovski crystal bezel, mother of pearl dial and a white leather strap.  
A16-10008



**CHATELET 21" CARRY-ON SPINNER TROLLEY.**  
Timeless and elegant, this piece is made from 100% virgin bayer makrolon polycarbonate. Features a fully lined interior with 2 packing compartments.  
Measures 13.75" x 9.75" x 21".  
A16-10011



**KENNETH COLE SHOW BUSINESS PORTFOLIO COMPUTER CASE.**  
Features rich full-grain cowhide leather exterior with a fully lined interior. The padded computer pocket can accommodate a laptop with up to a 5.6" screen. Measures 16" x 12.5" x 4".  
A16-10013.1



**LUMINOX SENTRY WATCH.**  
Features a carbon reinforced case and bezel with luminous dots, mineral hardened glass and stainless steel crown. Water resistant to 100 meters.  
A16-10015



**5-PIECE BOB MACKIE EXPANDABLE LUGGAGE SET.**  
Features inline skate wheels, protective bumper guards and retractable handle system. Set includes 20", 25", 28" pullmans, shoulder tote and toiletry kit.  
A16-10018



**ROUND DIAMOND EARRINGS.**  
Hand set in New York with 14k white gold 4-prong settings. The stone measures .125ctw and 3mm.  
A16-10009



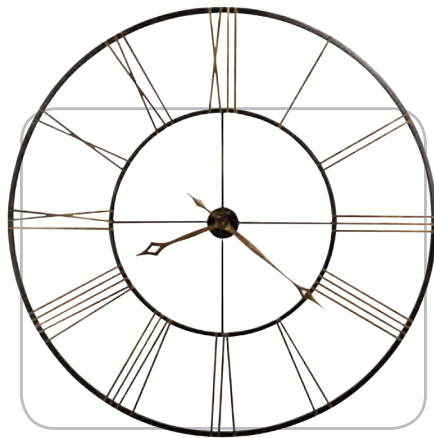
**KENNETH COLE HANDLE ME LEATHER TOTE.**  
No need to sacrifice looks for storage with this tote. This Kenneth Cole piece will help you keep your week days organized. Features polished hardware with signature logo detail.  
Measures 16" x 4" x 13".  
A16-10014



**TUMI ALPHA GARMENT COVER.**  
Slim and sleek, this garment cover is an effortless way to carry and protect a single suit or garment. It features an outside U-zip pocket for a travel kit or shoes and interior accessories pocket. Measures 2" x 39" x 24".  
A16-10016



**WHITE GOLD RIBBED HOOP EARRINGS.**  
As bold and expressive as the Italian artist who created them. These 20mm classic ribbed hoop earrings feature 14k white gold construction.  
A16-10020



**HOWARD MILLER POSTEMA WALL CLOCK.**  
This incredible 49" diameter wrought-iron wall clock is finished in aged black with applied antique gold numerals. The hour and minute hands are finished in antique gold and feature an open fret-cut diamond style.  
A16-10010



**WOOD WALL MOUNTED ELECTRIC FIREPLACE.**  
Features natural stained wood, a soft-touch control panel, 3D patented flame and a built-in 1400W heater. Measures 29.6" x 19.78" x 6.53".  
A16-10012



**TABLE LAMP ELECTRIC HEATER.**  
Warm up your outdoor living space with this 1,200 watt tabletop patio heater. This heater covers up to 115 square feet.  
Measures 19.7" x 19.7" x 35.8".  
A16-10019



**ANTWERP SILVER SPIKE BANGLER BRACELET.**  
This bangle style bracelet has an easy open and close flexibility. Contains 40 round CZ totaling approximately .6ct. A very fashion forward look.  
A16-10017



**GAMMA CARD CASE WITH MONEY CLIP.**  
For the man with refined style, this design boasts a sleek removable money clip, a slip pocket and one card slot. A compact alternative to a wallet. Measures 3.9" x 2.7".  
A16-10021



**STERLING SILVER LINK NECKLACE.**  
A chunky, funky and bold women's necklace with great contemporary curb link in sterling silver with a large lobster claw clasp. Terrific worn alone. Measures 18" in length.  
A16-10022



**REACTOR ATOM STAINLESS BRACELET WATCH.**  
Constructed from solid forged 316L stainless steel. Features a screw bar case-to-band interface, triple O-ring screw down system and a 10 year lithium power supply. Water resistant to 660 feet.  
A16-10025



**KENNETH COLE ESSEX LEATHER SACHEL.**  
Take your essentials with room to spare in this stylish satchel bag from Kenneth Cole New York. Features a textured leather, side belted detailing and bold gold-toned hardware. Measures 14.5" x 8.5" x 5.5".  
A16-10027



**WILSON ULTRA PACKAGE GOLF SET.**  
This men's right-handed set has everything you need to hit the links! Set includes 1, 3, 4H, 5-PW, putter, 3 head covers, rain hood and stand bag.  
A16-10029



**LG 22" 1080P LED HDTV.**  
Enjoy all of your favorite content on this 22" LED. The Triple XD engine enables more natural expression, deeper contrast and more refined motion so that viewers can enjoy a more lifelike picture.  
A16-10032



**NAMBE SERVING TRAY.**  
The simple plank design with subtly curved sides has just enough arc to capture the sauce on a salmon filet or the juice of a tenderloin. This tray will remain hot or cold during serving thanks to the thermal properties of Nambe metal. Measures 11" x 21".  
A16-10023



**14KT DIAMOND HEART NECKLACE.**  
Go to the heart of the matter with this gorgeous pendant necklace. Features a .03ct diamond set in 14k white gold on an 18" necklace.  
A16-10028



**DELONGHI ESPRESSO/CAPPUCCINO MAKER.**  
Features a dual-function filter holder which accommodates two separate attachments. The patented sempre crema filter enhances the brewing process to produce the perfect crema. The easy serving espresso filter makes espresso preparation simple and convenient.  
A16-10030



**SHIMANO CALCUTTA ROUND BAITCASTING REEL.**  
Provides years of solid performance. Uses a centrifugal force to control the cast, CF aluminum cold forge spool and meta series parts.  
A16-10034



**ROTATING STORAGE UNIT.**  
This rotating storage unit creates a smaller footprint suitable for any little princess's playroom or bedroom. Elegant construction holds all dress-up needs, dresses, scarves and boas on the side; purses, shoes and jewelry in the 5 compartments opposite. Measures 23.5" x 42" x 23.5".  
A16-10024



**HELIUM SKY 2-PIECE NESTED SET.**  
This set includes a carry-on and a 25" suiter trolley constructed of durable micro ballistec with a vapor barrier for long lasting use.  
A16-10026.1



**HARMON KARDON WIRELESS HD SPEAKER.**  
Simply set up the speaker and enjoy wireless room filling sound at the touch of a button. Includes power supply. Measures 10.25" x 6.6" x 6.5".  
A16-10031



**BLACK FIREHOUSE WITH CHIMNEY.**  
Kick your feet up and enjoy the ambiance. Throw a couple of burgers on the slide out cooking grid and you have a recipe for a perfect evening in your cozy backyard oasis. Measures 25" x 45.3" x 20.5".  
A16-10033



**ACTIFY DEEP FRYER.**  
Fry with less oil! This unit uses only 1 tablespoon of oil for 2 lbs. of French fries. Unique patented technologies include the stirring paddle and unique heat pulse system for perfect cooking.  
A16-10035



**ACTI-BREAD GLUTEN-FREE BREAD MAKER.**

Healthy eating has a new look. This gluten-free bread maker is finished in stainless steel and has 15 programs. There are 3 loaf sizes and 3 crust settings for all of your bread making needs.  
A16-10036



**WEBER 22" MASTER TOUCH CHARCOAL GRILL.**

This grill is outfitted with an innovative heavy-duty gourmet BBQ cooking system that has 2 grates. Grilling surface measures 22" in diameter.  
A16-10039



**BUSHNELL 2X28MM EQUINOX NIGHT VISION MONOCULAR.**

Offers 2x magnification with a 28mm objective lens and super bright Gen1 analog tube. Features a durable rubber covered housing and infrared illuminator.  
A16-10037



**HUMMINBIRD HELIX 5 SONAR.**

Features a 5" 800Hx480V display with DualBeam PLUS and 1500' depth capability.  
A16-10041

<https://indd.adobe.com/view/d01601f5-d3a6-4ec9-81f2-95cece746a91>



**10X50MM 3D BINOCULAR.**

Combining phase-coated prisms with HD optical coating technology to ensure the brightest, sharpest images possible. Ideal for hunting binoculars or birding binoculars.  
A16-10043



**GARMIN NUVI GPS.**

This GPS arrives loaded with detailed maps of North America and has free lifetime map updates to ensure your routes reflect the most up-to-date maps. Screen measures 4.3" diagonally.  
A16-10046



**YAMAHA SLIM SOUNDBAR WITH BUILT-IN SUBWOOFER.**

This ultra slim design soundbar offers deep rich bass with the built-in subwoofers. Simple setup with one cord connection. Features Bluetooth capability and 1 digital optical and 1 digital coaxial input.  
A16-10042



**SONY 3D STREAMING BLU-RAY PLAYER.**

View over 300 streaming apps in full HD! This player has 4K ultra HD upscaling and stronger and faster WiFi connectivity.  
A16-10044



**SUPER FAN TAILGATING PACKAGE.**

This package contains a charcoal grill, compact tailgating table, 45-can collapsible cooler and two quad chairs. Everything you need to tailgate before and after the big game.  
A16-10048



**WINDTUNNEL AIR STEERABLE BAGLESS UPRIGHT.**

Manage your cleaning tasks with a lightweight and easily maneuverable vacuum. Easily clean from room to room and up or downstairs with this highly effective vacuum. It comes equipped with WindTunnel 3 Technology that lifts and removes deep down embedded dirt.  
A16-10047



**TWO-BURNER GAS GRILL.**

This gas grill has 35,000 BTUs and 530 square inches of total cooking space. Features stainless steel burners and vaporizer bar, push-button ignition and weather resistant side shelves.  
A16-10049.1



**ENAMELED CAST IRON 3.25-QUART PAELLA PAN.**

Great to use on the stovetop or outdoor grill. Features a durable black enamel finish that requires no seasoning. Provides even heat distribution and superior heat retention.  
A16-10038



**BLACK & DECKER 4-PIECE COMBO TOOL KIT.**

The ultimate kit for DIYers, this 4-piece combo tool kit features a 20V Max drill/driver, reciprocating saw, circular saw and flashlight plus a soft bag to carry everything in.  
A16-10040



**MAXIFY WIRELESS OFFICE ALL-IN-ONE PRINTER.**

No matter the size of your home office, success is ultimately defined by the work that is done behind the scenes. This printer will help you work faster and smarter delivering crisp, colorful prints time after time.  
A16-10045



**MILWAUKEE CORDLESS DRILL/IMPACT COMBO KIT.**

This drill/driver delivers 275lbs of torque and the hex impact driver delivers 1000lbs of torque. Both pieces have battery gauge displays and ergonomic handles. A16-10050



**BREVILLE HEMISPHERE CONTROL BLENDER.**

This blender pulls down the ingredients on top while whipping the food below combining the functionality of a powerful blender with some food processing tasks for versatility and convenience. The large 48-ounce BPA-free jug is fitted with a permanent hemisphere blade and bowl system. A16-10053



**LE CREUSET SIGNATURE ENAMELED CAST IRON 5-QUART OVAL.**

The exterior enamel resists chipping and cracking while the interior enamel resists staining and dulling. The ergonomic composite knobs are heat resistant to 500F. A16-10055



**17" WHEELED LAPTOP CASE.**

This checkpoint friendly leather laptop case is the perfect companion for you trips. Constructed with high-quality leather. Measures 17" x 14.5" x 12". A16-10057



**100-BOTTLE WINE RACK.**

Sourced from the finest sustainable tree plantations in Indonesia, this jumbo bin grid 100-bottle wine rack is durable, eco-friendly and beautiful. Measures 42.92" x 42.92" x 9.04". A16-10060



**PORTER CABLE BRAD COMBO KIT.**

This kit contains a 6-gallon 150 psi compressor and an 18-gauge 2" braid nailer. The compressor weighs only 30lbs and features a maintenance-free pump. A16-10051



**13.3" ANDROID DUAL CORE TABLET.**

Features a 13.3" HD LCD display with 1280x800 resolution, Android 4.2 Jelly Bean operating system, Rock Chip 3066 Cortex A9 dual core, 16GB flash memory, 2.0 front and rear cameras and a built-in speaker. A16-10056



**BULOVA WOMEN'S BRACELET WATCH.**

This stainless steel watch features two-tone silver and rose-gold finish, 12 individually hand-set diamonds, white mother of pearl dial and luminous hands. Water resistant to 30 meters. A16-10058



**CUBIC ZIRCONIA TENNIS BRACELET.**

A classic look that is certain to take your breath away. This timeless design features a brilliant array of shimmering CZ arranged in a series of squared links. The 9ctw CZ bracelet measures 7.25" in length. A16-10062



**POSTING UP BY RYAN KIRBY FRAMED CANVAS.**

This spectacular 24" x 32" canvas of a buck has been painted perfectly and is complimented by a rustic frame. A16-10061



**T-FAL WEAREVER PURE LIVING CERAMIC 15-PIECE SET.**

A different mix of very functional pieces with a great look. The set offers a white interior with a bright red exterior. The aluminum base provides even distribution of heat. A16-10052



**WEBER Q GAS GRILL.**

Features a high-performance cooking system that generates 12,000 BTU-per-hour, easy-grip handles and 280 square inches of total cooking area. The included push-button ignition provides easy, reliable lighting. A16-10054



**CORNETTO SINGLE WINE DECANTER.**

Made of 24% lead crystal glass with a long deep base design. Easy to pour with the slim neck. Measures 12.63" in height and has a 41.25oz capacity. A16-10059



**ACCENT TABLE WITH DRAWER.**

Made from durable rubber wood with an antique cherry finish. Measures 19.5" x 19.5" x 27.5". A16-10063





**DIAMOND NECKLACE.**

A strong dynamic presence that makes a statement all on its own. This contemporary diamond necklace contains .06twt round brilliant cut diamonds set in 10k white gold with an 18" Singapore chain.

A16-10064



**WATCHGEAR BY TOURNEUA WOMEN'S CHRONOGRAPH WATCH.**

Features a 40mm steel case and bracelet, black mother of pearl dial, Swarovski crystal markers and bezel and Swiss quartz movement.

A16-10067



**CITIZEN MEN'S ECO-DRIVE WATCH.**

Brings the nostalgia of racing on open waters to your wrist. This nautically inspired watch features a dark blue dial, one-way rotating elapsed time bezel and a two-tone bracelet. Water resistant to 200 meters.

A16-10069



**GUCCI SILVER BRITT BRACELET.**

Make a bold statement with this Gucci bracelet. This 18cm chain link bracelet features an interlocking Gucci G motif charm.

A16-10071



**NEW YORKER 4-PIECE EXPANDABLE LUGGAGE SET.**

Constructed of durable polyester and dobby polyester. Features a push-button easy glide handles system and recessed inline skate wheels. Includes 29", 25" and 21" uprights, and a 15" tote.

A16-10074



**GUCCI SILVER BRITT EARRINGS.**

These sterling silver drop earrings feature an interlocking G motif pendant and measure .9" in length.

A16-10065



**BLUE TOPAZ EARRINGS.**

Majestic and bold blue topaz and diamond earrings feature 8mm genuine cushion cut blue topaz with .08twt round diamonds set in sterling silver.

A16-10070



**POLO RALPH LAUREN NEWBURY LEATHER DOUBLE ZIP SACHEL.**

Crafted from rich leather, this satchel is designed with multiple zippered compartments and a signature monogram at the front. Measures 16" x 6.75" x 11".

A16-10072



**ROUND DIAMOND PENDANT NECKLACE.**

Hand set in New York with a 14k white gold 4-prong setting. The stone measures .18ctw and 3.5mm.

A16-10075



**MICHAEL KORS WOMEN'S KERRY PAVE SILVER-TONE WATCH.**

Features a silver-tone stainless steel bracelet with crystal stone accents, mother-of-pearl dial and mineral crystal window.

Water resistant to 50 meters.

A16-10076.1



**SARAH'S HOPE SCHIRLYN PENDANT NECKLACE.**

Crafted from rhodium plated .925 sterling silver and a unique and vibrant E'Sperene stone. The pendant slides easily on a round snake chain.

A16-10066



**PROFLOW PHOTOCROMIC SUNGLASSES.**

Features suspended hinge geometry, a carbon core chassis, total comfort system and air channels on the side of the temples to reduce thermal shock and prevent fogging.

A16-10068



**10" PEWTER PUNCH BOWL.**

This 10" punch bowl is a large and elegant piece that's perfect for your party table, champion award, or perpetual trophy. It has a 1 gallon capacity.

Handcrafted in the U.S.A.

A16-10073



**MONTBLANC CRUISE BALLPOINT PEN.**

This gorgeous pen is finished in a deep black precious resin with elegant platinum-plated fittings and a Montblanc emblem on the cap top.

A16-10077



**MULTISTRAND PEARL BRACELET.**

This beautiful multistrand bracelet features white freshwater pearls that measure 4-4.5mm and 14k white gold. Bracelet measures 7-7.5" in length.  
A16-10078



**KATE SPADE COBBLE HILL BAG.**

A soft bodied little sack that has a lot of style so you can wear it anywhere. This perfect bag is constructed of luxurious pebbled cowhide and measures 3.7" x 10.3" x 10.5".  
A16-10079



**VIGOR HARDSIDE CARRY-ON SPINNER.**

Features 100% polycarbonate hard side material with four multi-directional spinner wheels and a telescoping retractable handle. Measures 24" x 16" x 9.75".  
A16-10080



**DIAMOND NECKLACE.**

This nouveau diamond necklace with .10ct round diamonds is set in 10k yellow gold. The dazzling pendant is suspended from an 18" rope chain.  
A16-10081



**HOWARD MILLER GRAHAM BRACKET III TABLE CLOCK.**

The brass finished dial offers a silver chapter ring and decorative corner spandrels. The quartz, dual-chime Kieninger movement plays full Westminster or Ave Maria chimes. Measures 17 x 10 x 15.  
A16-10083



**14KT WHITE GOLD EARRINGS.**

Dainty yet bold, these 14k white gold earrings will match any outfit, day or night. The earrings dangle with brushed, polished and diamond cut circles with a post back. They measure approximately 40mm in length and 2.99 grams.  
A16-10084



**GUCCI TOGGLE HEART NECKLACE.**

A beautiful sterling silver necklace with boule chain and toggle closure with a heart motif. Measures 43cm in length.  
A16-10082



## Our Values

### INNOVATION

I seek better ways to perform my work, find creative solutions, and embrace change.

### COLLABORATION

I understand that mutual respect and teamwork are critical to accomplishing goals.

I work with others to achieve the best individual and collective outcomes.

### ACCOUNTABILITY

I use resources efficiently, respond to others promptly, face challenges in a timely manner, and accept responsibility for my actions and decisions.

### RESPECT

I respect the dignity and diversity of our associates, physicians, patients, family, and community members. I promote trust, fairness, and inclusiveness through honest and open communication.

### EXCELLENCE

I believe in serving others by pursuing excellence in healthcare.  
I compassionately care for the mind, body, and spirit of each patient.

